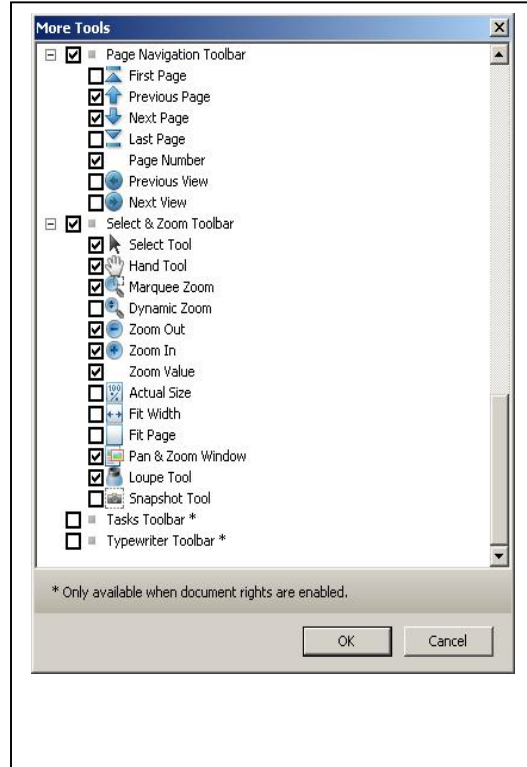
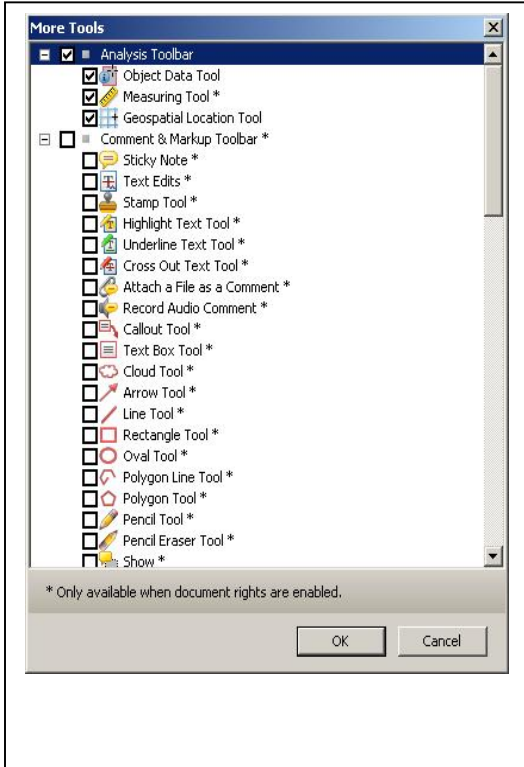


# Navigation Instructions for a GeoPDF File.

GeoPDF's are interactive and have data behind the polygons or wells.

Activation of the appropriate tool bars:

Click Menu "View", then "Tool Bars", then "More Tools", Find "Analysis Toolbar", click "Object Data Tool", "Measuring Tool", and "Geospatial Location Tool" on. I also activate the "Marquee Zoom" and "Hand Tool" under the "Select and Zoom Toolbar".



Infopipe® Information Services, Inc [www.infopipe.com](http://www.infopipe.com)  
[darrell@infopipe.com](mailto:darrell@infopipe.com) 303-973-7459 Fax: 720-981-5668

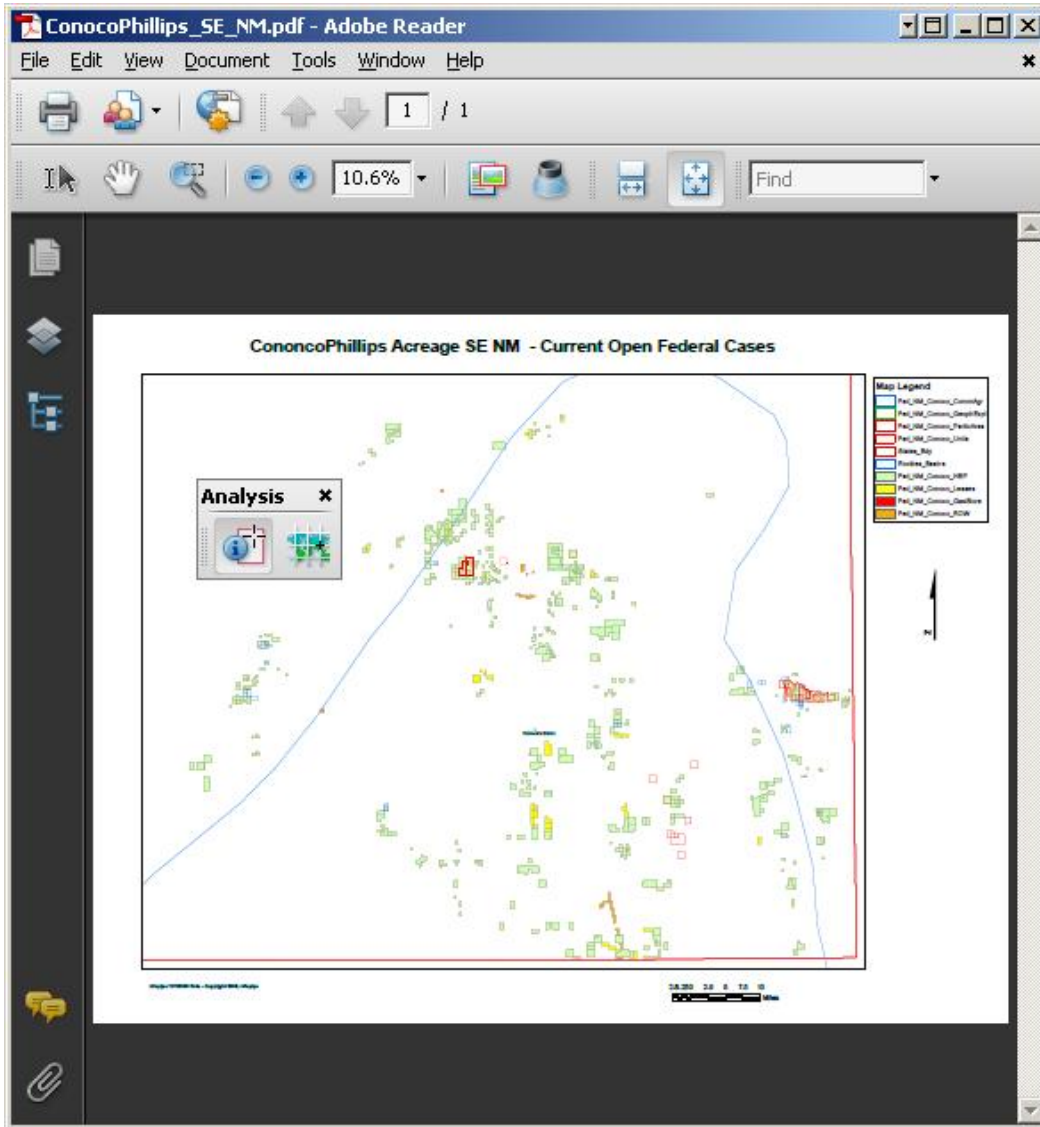


After you choose OK, then you can dock the new tools if they are not already docked. Now you can choose the object data tool. The Analysis Toolbar is shown not docked below. This is the



object tool -> Press on it and choose a polygon and you will be able see the data.

This Image is not zoomed.

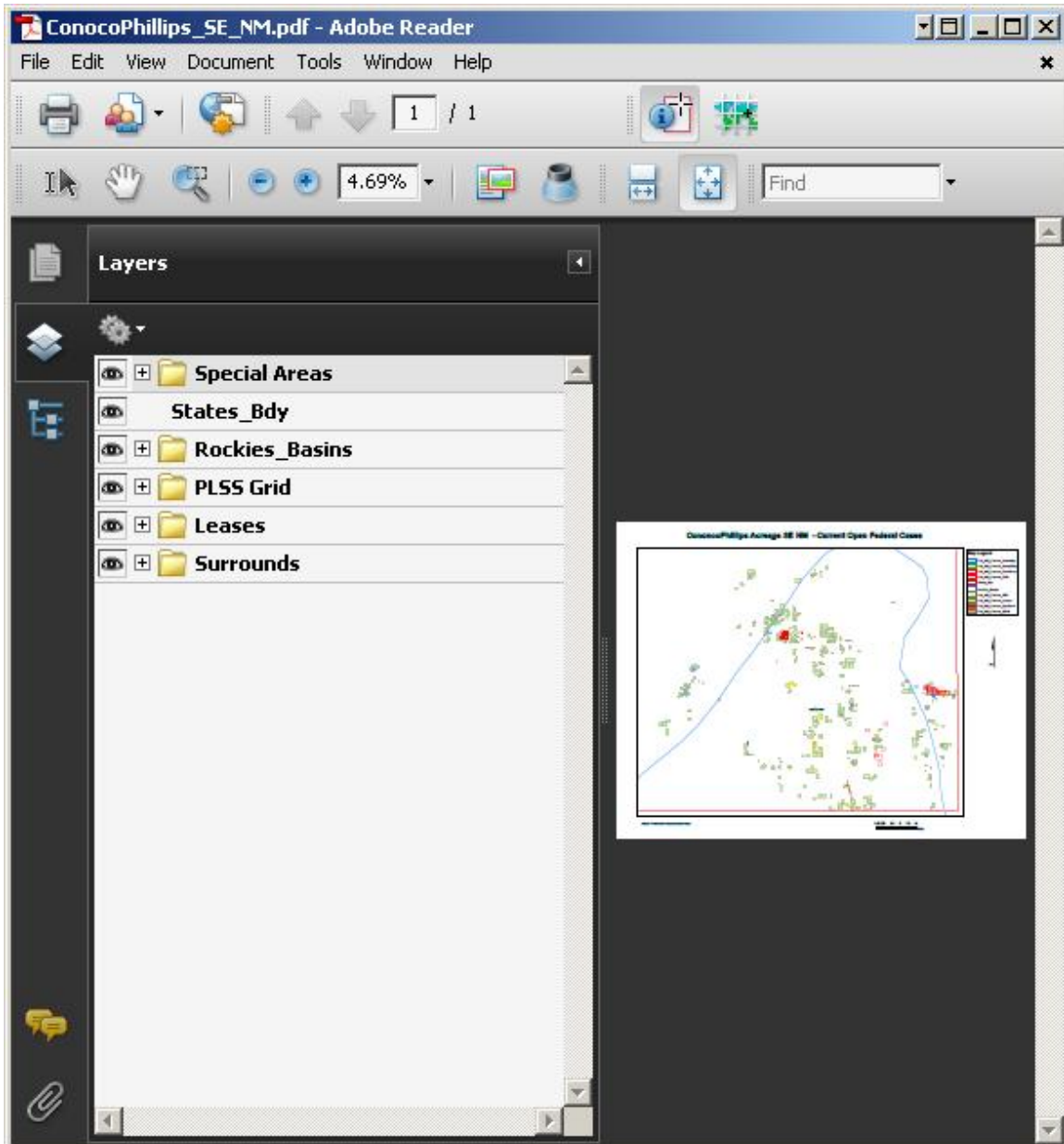


Infopipe® Information Services, Inc [www.infopipe.com](http://www.infopipe.com)  
[darrell@infopipe.com](mailto:darrell@infopipe.com) 303-973-7459 Fax: 720-981-5668



Other Navigation Panel buttons are shown on the left that allow you to select Layers to turn on and off (the image below is unzoomed). Press the "eyes" to deactivate and activate.

This Image is not zoomed.



Infopipe® Information Services, Inc [www.infopipe.com](http://www.infopipe.com)  
[darrell@infopipe.com](mailto:darrell@infopipe.com) 303-973-7459 Fax: 720-981-5668



And activating a model tree to view data.

This Image is not zoomed and shows our Primitive Data Set format with the link to our Serial Register Page Site. We have a more GIS-Oriented Data Set format for more complex queries.

The screenshot shows the Adobe Reader interface for a PDF document titled "ConocoPhillips\_SE\_NM.pdf". The Model Tree on the left displays a table of properties and values for a specific record. The map on the right shows a geographical area with various colored markers.

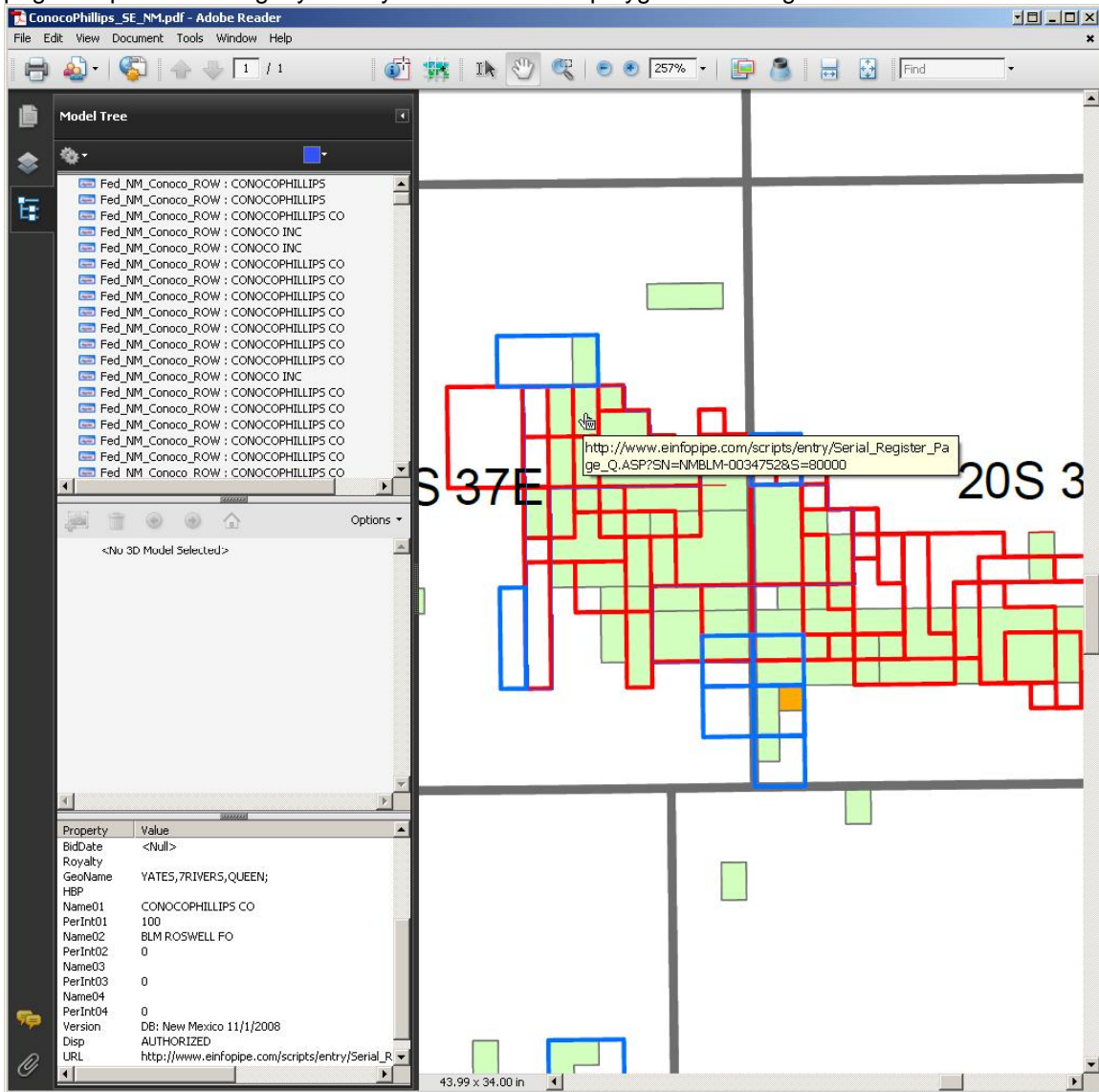
Property	Value
FID	4
SerialNumb	NMMN-070954A
BidRecd	
Acres	2531.63
Status	L
CaseType	O&G PARTICIPATING AREA
Commodity	OIL & GAS L
ExpireDate	<Null>
ExpireYear	0
EffectDate	10/20/1954
BidDate	<Null>
Royalty	
GeoName	UA-GRAYBURG DEEP;
HBP	
Name01	CONOCOPHILLIPS CO
PerInt01	100
Name02	BLM ROSWELL FO
PerInt02	0
Name03	
PerInt03	0
Name04	
PerInt04	0
Version	DB: New Mexico 11/1/2008
Disp	AUTHORIZED
URL	<a href="http://www.infopipe.com/scripts/entry/Serial_F">http://www.infopipe.com/scripts/entry/Serial_F</a>
SourceStat	OD



Infopipe® Information Services, Inc [www.infopipe.com](http://www.infopipe.com)  
[darrell@infopipe.com](mailto:darrell@infopipe.com) 303-973-7459 Fax: 720-981-5668



You can also use hyperlinks in the map by activating the "Hand" tool and hovering over a polygon or well. The hyperlink will appear and you can click to open a browser to move to the link. If you are using Infopipe's SRP or RMOJ's site, then you will have to login the first time to allow the page to open. After login you may have to click the polygon or well again.



Infopipe® Information Services, Inc [www.infopipe.com](http://www.infopipe.com)  
[darrell@infopipe.com](mailto:darrell@infopipe.com) 303-973-7459 Fax: 720-981-5668

